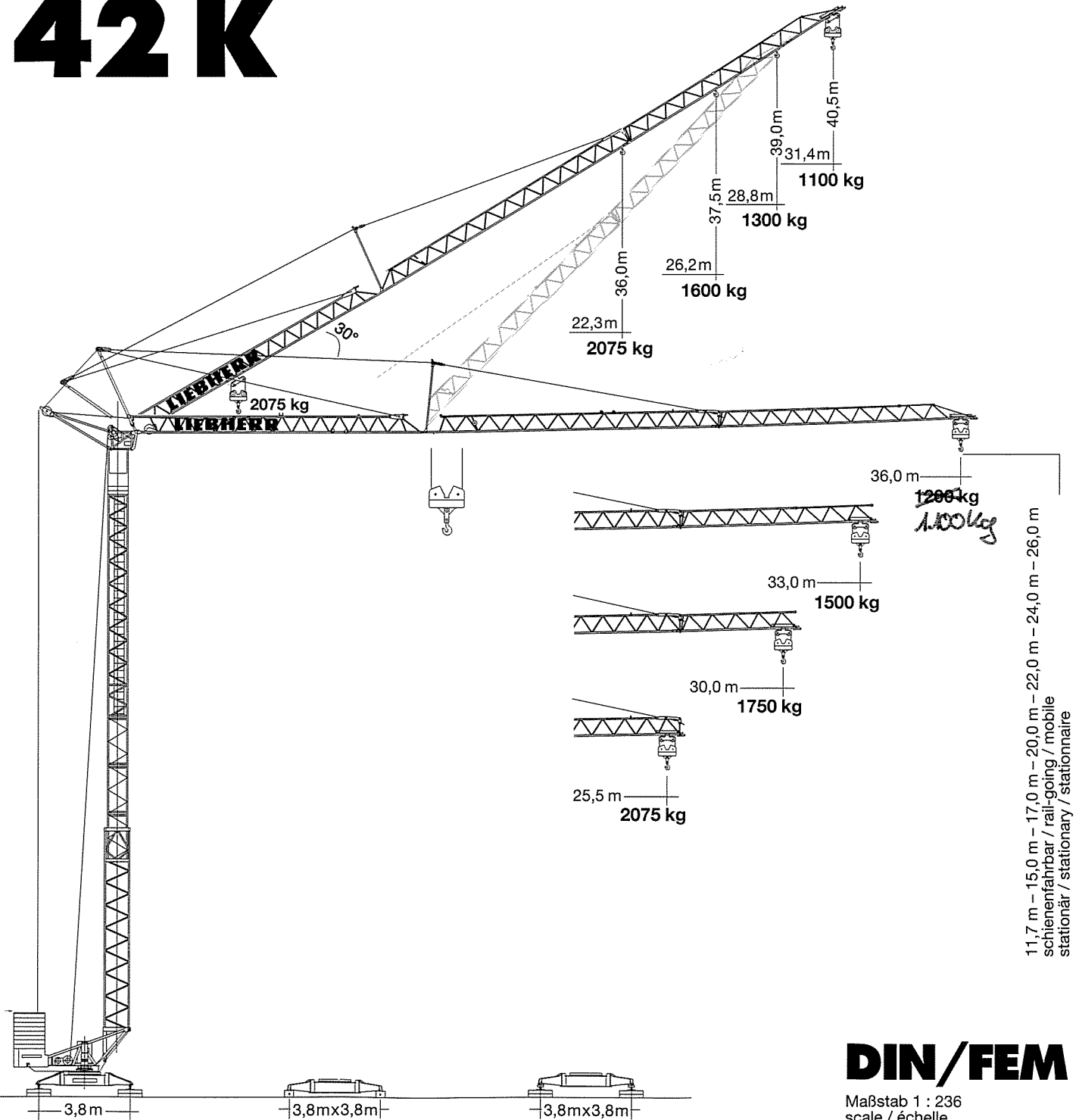
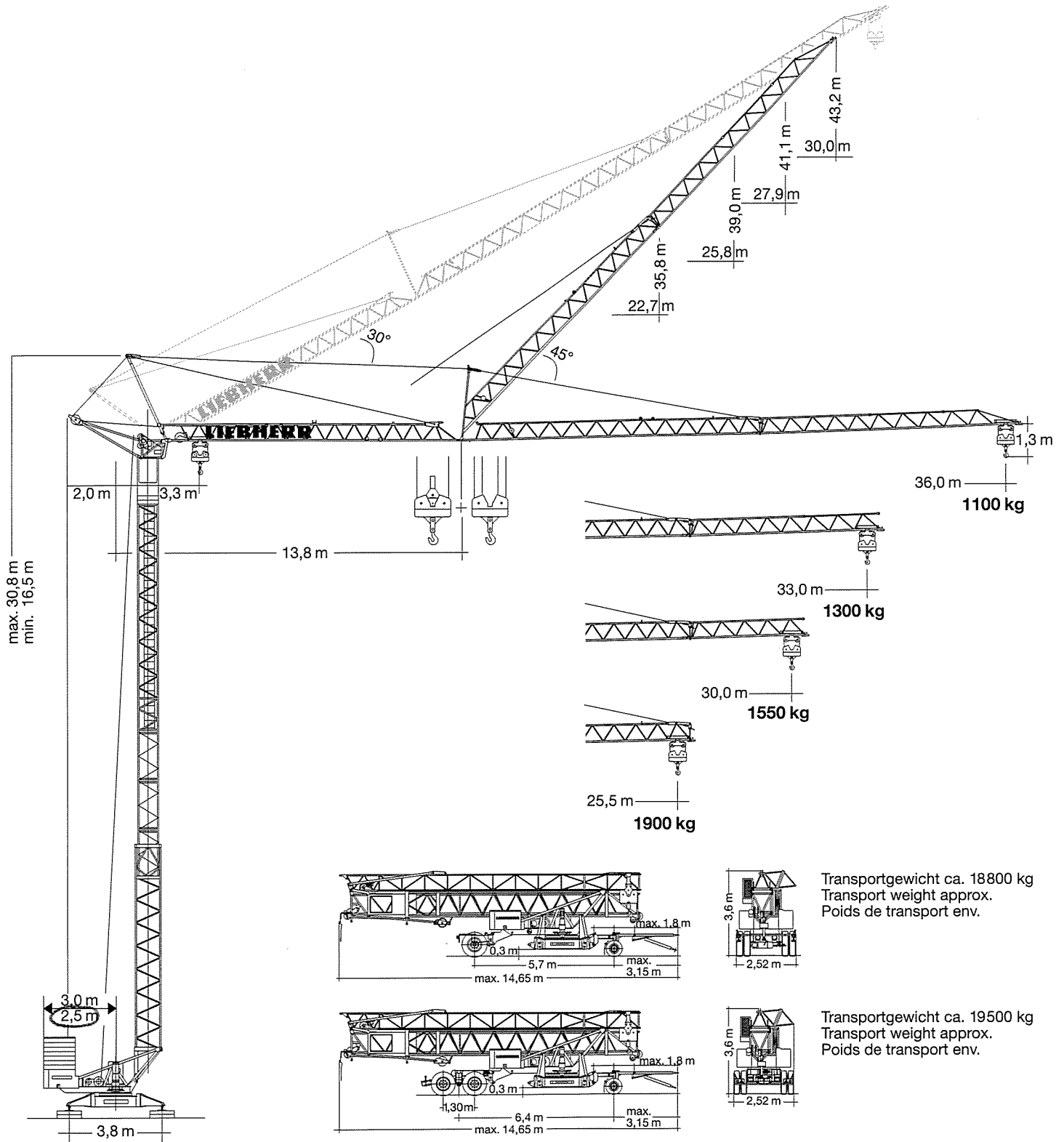


**Tower Crane
Grue à tour**

Turmdrehkran 42 K



LIEBHERR



Gewicht

Weight

Poids

Zentralballast Central ballast weight Lest de base		1400 kg	Konstruktionsgewicht ca. Dead weight approx. Poids de la construction env.	10960 kg (bei max. HH 26 m: + 900 kg)
Gegengewicht Counterweight Contrepoids	r = 3,0 m r = 2,5 m	22440 kg 26360 kg		

42K

Ausladung und Tragfähigkeit

Radius and capacity / Portée et charge

42K

Auslegerlänge Length of jib Longueur de flèche m	max. kg m/kg	m/kg																						
		20,0	21,0	22,0	23,0	24,9	25,5	26,0	26,5	27,5	28,0	29,5	30,0	31,0	32,9	33,0	34,0	35,0	36,0					
36,0	3,3 - 20,90 2075					2075	2065	1950	1850	1680	1635	1600	1560	1500	1460	1370	1340	1290	1200	1200	1200	1200	1200	1200
33,0	3,3 - 20,95 2075					2075	2070	1960	1860	1690	1640	1600	1570	1500	1500	1500	1500	1500	1500	1500	1500	1500	1500	1500
30,0	3,3 - 21,60 2075					2075	2075	2030	1925	1750	1750	1750	1750	1750	1750	1750	1750	1750	1750	1750	1750	1750	1750	1750
25,5	3,3 - 22,63 2075					2075	2075	2075	2075	2075	2075	2075	2075	2075	2075	2075	2075	2075	2075	2075	2075	2075	2075	2075

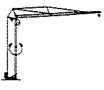
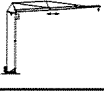

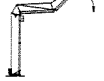
m	max. kg m/kg	m/kg																					
		11,0	12,0	13,0	14,0	16,0	18,0	20,0	23,6	24,0	25,5	26,0	26,5	27,0	28,0	29,5	30,0	31,0	32,0	33,0	33,5	35,0	36,0
36,0	3,3 - 20,90 2000	2000	2000	2000	2000	2000	2000	2000	1720	1680	1560	1520	1490	1450	1390	1300	1270	1220	1170	1120	1100	1100	1100
33,0	3,3 - 20,95 2000	2000	2000	2000	2000	2000	2000	2000	1725	1690	1565	1530	1490	1460	1390	1300	1300	1300	1300	1300	1300	1300	1300
30,0	3,3 - 21,60 2000	2000	2000	2000	2000	2000	2000	2000	1790	1755	1630	1590	1550	1550	1550	1550	1550	1550	1550	1550	1550	1550	1550
25,5	3,3 - 22,63 2000	2000	2000	2000	2000	2000	2000	2000	1900	1900	1900	1900	1900	1900	1900	1900	1900	1900	1900	1900	1900	1900	1900


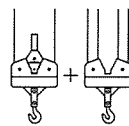
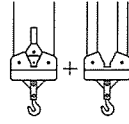
m	max. kg m/kg	m/kg																					
		11,0	12,0	13,0	14,0	16,0	18,0	20,0	23,6	24,0	25,5	26,0	26,5	27,0	28,0	29,5	30,0	31,0	32,0	33,0	33,5	35,0	36,0
36,0	3,3 - 11,98 4000	4000	4000	3610	3290	2790	2410	2200	1880	1840	1705	1665	1625	1590	1520	1420	1390	1330	1280	1230	1210	1140	1100
33,0	3,3 - 12,02 4000	4000	4000	3620	3300	2800	2600	2420	1980	1940	1800	1750	1710	1670	1600	1500	1470	1410	1350	1300	1300	1300	1300
30,0	3,3 - 12,35 4000	4000	4000	3755	3420	3100	2900	2550	2080	2040	1895	1850	1810	1770	1690	1580	1550	1550	1550	1550	1550	1550	1550
25,5	3,3 - 12,89 4000	4000	4000	3960	3800	3360	2910	2560	2090	2050	1900	1900	1900	1900	1900	1900	1900	1900	1900	1900	1900	1900	1900

m	max. kg m/kg	Auslegersteilstellung 30° / Elevated jib 30° / Flèche inclinée 30° m/kg															
		17,0	18,0	19,0	20,0	21,0	22,3	23,0	24,0	25,0	26,2	27,0	28,0	28,8	30,0	31,0	31,4
36,0	3,0 - 17,4 2075	2030	1890	1760	1650	1550	1430	1370	1300	1230	1150	1110	1100	1100	1100	1100	1100
33,0	3,0 - 18,4 2075	2075	2030	1890	1770	1670	1540	1480	1400	1330	1300	1300	1300	1300	1300	1300	1300
30,0	3,0 - 18,9 2075	2075	2075	1970	1840	1730	1600	1600	1600	1600	1600	1600	1600	1600	1600	1600	1600
25,5	3,0 - 19,8 2075	2075	2075	2075	2075	2075	2075	2075	2075	2075	2075	2075	2075	2075	2075	2075	2075

Geschwindigkeiten

Speeds / Vitesses

	U/min. 0 ↔ 0,9 sl./min tr./min	3,0 kW, EDC
	20,0 / 40,0 m/min	1,3 / 2,3 kW
	25,0 m/min	2 x 1,3 kW
	0 - 45° ca. 30 sec.	3,0 kW

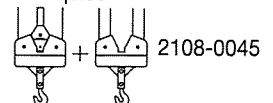
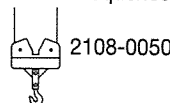
Hubwerk Hoist unit Mécanisme de levage	Stufe Step Cran	kg	m/min
11,0 kW 	1	2075	6,0
	2	2075	25,0
	3	1000	50,0
11,0 kW 	1	2000 4000	6,0 3,0
	2	2000 4000	25,0 12,5
	3	1000 2000	50,0 25,0
11,0 kW (FU) 	1	2000 4000	3,0 1,5
	2	2000 4000	30,0 15,0
	3	1500 3000	40,0 20,0
	4	1000 2000	55,0 27,5

Leitungsquerschnitt bei 400 V bis 63,0 m 4 x 10 mm² (KL) Betriebsspannung 400 V
 Cross section of cable up to 4 x 6 mm² (FU) Operating voltage 400 V
 Section de câble à jusqu'à 4 x 6 mm² (FU) Tension de service 400 V

Frequenz 50 Hz
 Frequency 50 Hz
 Fréquence 50 Hz

Anschlußwert 21,0 kVA (KL)
 Power requirement 17,0 kVA (FU)
 Puissance requise 17,0 kVA (FU)

Technische Kenngröße nach BGL
 Technical nominal size according to the construction machinery list (BGL)
 Grandeur caractéristique suivant le barème d'emploi des appareils (BGL)



Technische Daten - Technical data

Caractéristiques techniques